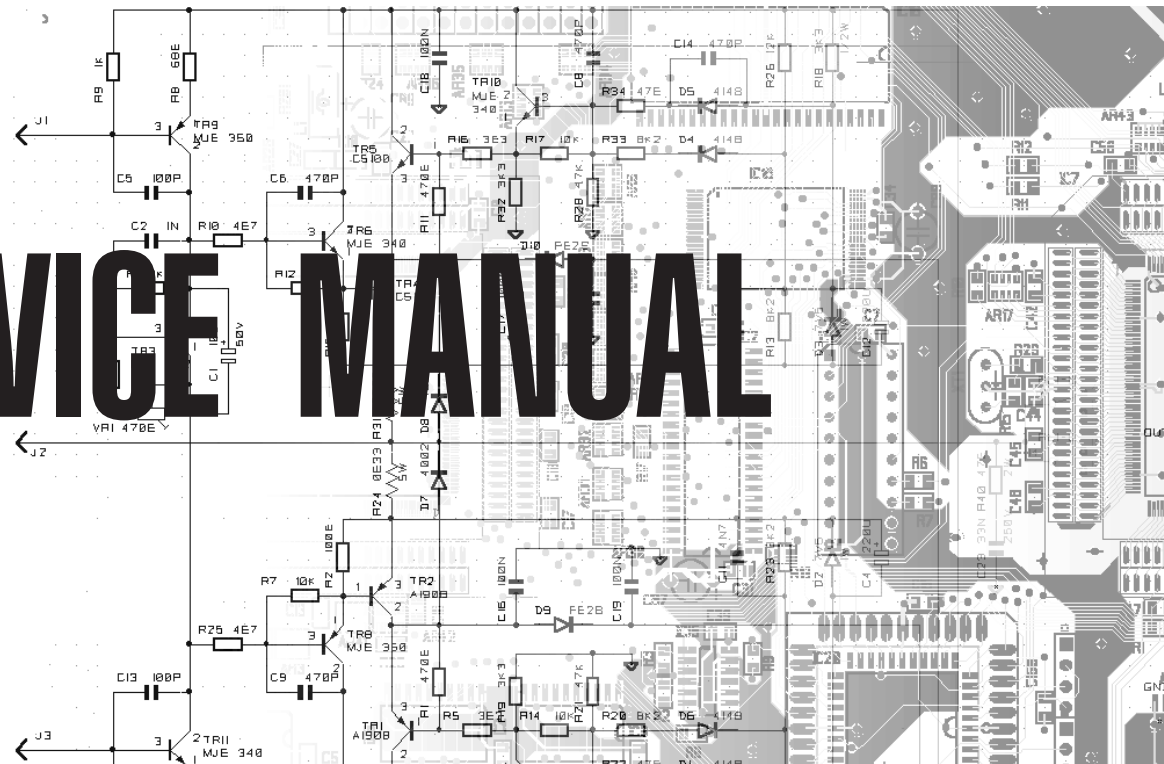




FX 24

40-bit DUAL STEREO DIGITAL EFFECT PROCESSOR

SERVICE MANUAL



Index

- 2 Technical Specifications & Preset Table
- 3 Controls & Rear Panels
- 4 Supply Board, In/Out Board, Controls Panel Board
- 5 Cpu/Dsp & AD/DA Board
- 6 Timing Table & Spare Part List

Warnings



Notice

Service must be carried out by qualified personnel only. Any tampering carried out by unqualified personnel during the guarantee period will forfeit the right to guarantee.

For a correct operation of the instrument, after having switched off, be careful to wait at least 3 seconds before switching on again.

To improve the device's specifications, the schematic diagrams may be subject to change without prior notice.

All components marked by this symbol have special safety characteristics, when replacing any of these components use only manufacturer's specified parts.

The (μ) micro symbol of capacitance value is substituted by U.

The (Ω) omega symbol of resistance value is substituted by E.

The electrolytic capacitors are 25Vdc rated voltage unless otherwise specified.

All resistors are 1/8W unless otherwise specified.

All switches shown in the "OFF" position. All DC voltages measured to ground with a voltmeter 20KOhm/V.

← Soldering point.

↑ Supply voltage.

⊥ Logic supply ground.

• Male connector.

□ Test point.

⊥ Analog supply ground.

○ Female connector.

◊ Flag joined with one or more flags with the same signal name inscribed.

⊥ Chassis ground.

⊔ M/F faston connector.

⊥ Earth ground.



ATTENTION

Observe precautions when handling electrostatic sensitive devices.

Address



GENERALMUSIC S.p.A. Sales Division: 47842 S.Giovanni in Marignano (RN) ITALY - Via delle Rose, 12



Phone +39(0)541/959511 - Fax +39(0)541/957404 - GENERALMUSIC on the NET: <http://www.generalmusic.com>



▶ CODE: 270251 ◀

FX 24 • TECHNICAL SPECIFICATIONS

INPUT section

| | |
|-------------------|--------------------------|
| Connectors | 2 x JACK 1/4" unbalanced |
| Input sensitivity | 0 dB / 0.775 V |
| Max. input level | +12 dB |
| Impedance | 47 kOhms |

OUTPUT section

| | |
|----------------------|--------------------------|
| Connectors | 4 x JACK 1/4" unbalanced |
| Nominal output level | 0 dB |
| Max. output level | +12 dB |
| Impedance | 1 kOhms |

DSP section

| | |
|--------------------|--------|
| A/D converters | 20 bit |
| D/A converters | 24 bit |
| Internal dynamics | 40 bit |
| Sampling frequency | 48 kHz |

Features

| | |
|-----------------|--|
| Configuration | FULL DUAL STEREO (2 IN / 4 OUT): 2 stereo effects completely independents |
| Features | Up to 3 effect ALGORITHMS for each PRESET 3 EDITABLE PARAMETERS for each effect ALGORITHMS 128 FACTORY PRESETS + 128 USER PRESETS for each A & B section 64 + 64 GLOBAL MIDI implementation |
| Type of effects | Hall, Room, Vocal, Plate & Gate Reverbs - Delay - Chorus - Flanger - Phaser - Rotary - Pitch Shift |
| Controls | 3-DIGIT LCD with rotary DIAL MACHINE A & B selector EDIT buttons REVERB, DEALY & MODULATION + PARAMETER selector MIX selector for IN/OUT LEVEL and BALANCE GLOBAL and MIDI selectors RECALL and STORE buttons for PRESETS and GLOBALS SIGNAL/PEAK LEDs BYPASS switch and MUTE FOOTSWITCH connector (rear panel) |

General Specifications

| | |
|--------------------|----------------------------------|
| Frequency response | 20 Hz - 20 kHz |
| Dynamic range | 102 dB |
| Distortion (THD) | 0.06% @ 1 kHz (dry) |
| Power supply | see label on the unit rear panel |
| Dimensions | 483 x 44 x 300 mm (W x H x D) |
| Weight | 4.0 kg |

FX 24 - PRESET TABLE

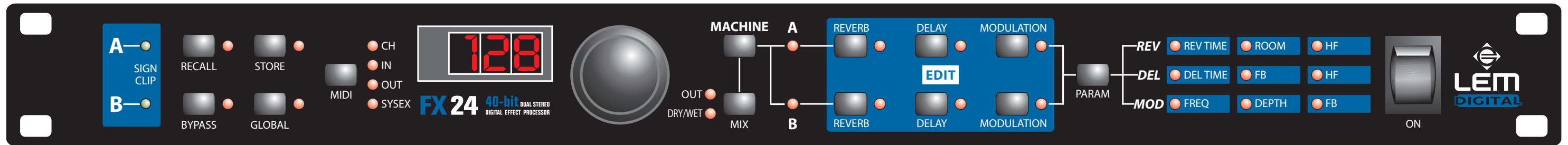
| No. | REVERBS | REV | RT | ROOM | PD | HF | | | | | | | | | | | | | | |
|-----|-------------------|---------|-------------|------------|-----------|-------|--------|------------|------------|-----------|--------|-------|------|-----------|-----------|--------|-------|--|--|--|
| 1 | Large Bright Hall | Hall | 2.4 | 54 | 22 | 6.94 | | | | | | | | | | | | | | |
| 2 | Small Bright Hall | Hall | 1.5 | 38 | 14 | 6.94 | | | | | | | | | | | | | | |
| 3 | Brass Hall | Hall | 1.7 | 50 | 40 | 8.98 | | | | | | | | | | | | | | |
| 4 | Crystal Hall | Hall | 1.7 | 35 | 22 | thru | | | | | | | | | | | | | | |
| 5 | Choir Hall | Hall | 1.7 | 38 | 16 | 11.6 | | | | | | | | | | | | | | |
| 6 | Percussion Hall | Hall | 1.7 | 35 | 16 | 8.98 | | | | | | | | | | | | | | |
| 7 | Large Warm Hall | Hall | 2.9 | 55 | 23 | 1.49 | | | | | | | | | | | | | | |
| 8 | Small Warm Hall | Hall | 1.7 | 38 | 14 | 1.92 | | | | | | | | | | | | | | |
| 9 | Acoustic Hall | Hall | 1.7 | 45 | 20 | 1.92 | | | | | | | | | | | | | | |
| 10 | Concert Hall | Hall | 0.9 | 45 | 35 | 1.15 | | | | | | | | | | | | | | |
| 11 | Horn Hall | Hall | 2.1 | 40 | 50 | 5.37 | | | | | | | | | | | | | | |
| 12 | Cathedral | Hall | 6.1 | 55 | 50 | 1.49 | | | | | | | | | | | | | | |
| 13 | Stadium | Hall | 2.4 | 55 | 50 | 0.53 | | | | | | | | | | | | | | |
| 14 | Large Room | Room | 1.7 | 45 | 15 | 5.37 | | | | | | | | | | | | | | |
| 15 | Small Room | Room | 0.8 | 25 | 7 | 2.49 | | | | | | | | | | | | | | |
| 16 | Tom Room | Room | 1.3 | 35 | 8 | 8.98 | | | | | | | | | | | | | | |
| 17 | BD Room | Room | 0.8 | 25 | 7 | 5.37 | | | | | | | | | | | | | | |
| 18 | SD Room | Room | 0.9 | 35 | 6 | 1.15 | | | | | | | | | | | | | | |
| 19 | Dark Room | Room | 1.0 | 30 | 9 | 3.21 | | | | | | | | | | | | | | |
| 20 | Female Long | Vocal | 2.9 | 70 | 70 | 3.21 | | | | | | | | | | | | | | |
| 21 | Female Short | Vocal | 0.9 | 15 | 30 | 3.21 | | | | | | | | | | | | | | |
| 22 | Male Long | Vocal | 2.9 | 70 | 70 | 4.16 | | | | | | | | | | | | | | |
| 23 | Male Short | Vocal | 0.9 | 15 | 30 | 4.16 | | | | | | | | | | | | | | |
| 24 | Backing Vox | Vocal | 0.7 | 50 | 70 | 6.94 | | | | | | | | | | | | | | |
| 25 | Drums Small | Plate | 1.2 | 22 | 8 | 5.37 | | | | | | | | | | | | | | |
| 26 | Drums Large | Plate | 3.6 | 22 | 40 | 8.98 | | | | | | | | | | | | | | |
| 27 | Piano Small | Plate | 0.6 | 5 | 15 | 11.6 | | | | | | | | | | | | | | |
| 28 | Piano Large | Plate | 1.3 | 42 | 20 | 5.37 | | | | | | | | | | | | | | |
| 29 | Vocal Small | Plate | 1.0 | 15 | 15 | 1.15 | | | | | | | | | | | | | | |
| 30 | Vocal Large | Plate | 2.1 | 45 | 33 | 6.94 | | | | | | | | | | | | | | |
| 31 | SD Gate | Gate | 0.9 | 35 | 6 | 1.15 | | | | | | | | | | | | | | |
| 32 | BD Gate | Gate | 0.8 | 25 | 7 | 5.37 | | | | | | | | | | | | | | |
| 33 | Percussion Gate | Gate | 1.2 | 23 | 7 | 6.94 | | | | | | | | | | | | | | |
| 34 | Vocal Gate | Gate | 0.6 | 50 | 40 | 8.98 | | | | | | | | | | | | | | |
| 35 | Brass Gate | Gate | 1.7 | 50 | 40 | 8.98 | | | | | | | | | | | | | | |
| 36 | Rhythm Gate | Gate | 1.5 | 30 | 20 | 8.98 | | | | | | | | | | | | | | |
| 37 | Strong Cut | Gate | 2.1 | 20 | 10 | 3.21 | | | | | | | | | | | | | | |
| No. | DELAYS | DEL | LD | RD | L FB | R FB | HF | | | | | | | | | | | | | |
| 38 | Mono Delay | Mono | 200 | 200 | 50% | 50% | 0 | | | | | | | | | | | | | |
| 39 | Stereo Delay | Stereo | 250 | 500 | 56% | 23% | 0 | | | | | | | | | | | | | |
| 40 | Tube | Stereo | 35 | 35 | 59.5% | 52 | 0 | | | | | | | | | | | | | |
| 41 | Bounce | Stereo | 500 | 250 | 0% | 0% | -3 | | | | | | | | | | | | | |
| 42 | Tape Back | Stereo | 35 | 75 | 11% | 11% | -1 | | | | | | | | | | | | | |
| 43 | R&R | Stereo | 69 | 80 | 21% | 21% | 0 | | | | | | | | | | | | | |
| No. | MODULATIONS | MOD | Mod. freq. | Mod. Depth | Pan Depth | R FB | L FB | LPF | Pan freq. | Slow/Fast | Attack | Xover | | | | | | | | |
| 44 | Vocal Chorus | Chorus | 0.8 | 80.0 | 0 | | | | | | | | | | | | | | | |
| 45 | Guitar Chorus | Chorus | 0.7 | 61.5 | 29.0 | | | | | | | | | | | | | | | |
| 46 | Rich Chorus | Chorus | 1.1 | 87.0 | 29.0 | | | | | | | | | | | | | | | |
| 47 | Vibra Chorus | Chorus | 5.3 | 16.5 | 0 | | | | | | | | | | | | | | | |
| 48 | Moving Flanger | Flanger | 1.6 | 25.5 | 47.5 | 67.5% | 67.5% | | | | | | | | | | | | | |
| 49 | Guitar Flanger | Flanger | 1.6 | 43.0 | 0 | 65% | 65% | | | | | | | | | | | | | |
| 50 | Rich Flanger | Flanger | 1.6 | 66.5 | 43.0 | 75.5% | 64% | | | | | | | | | | | | | |
| 51 | Large Flanger | Flanger | 0.2 | 89.5 | 16.5 | 75.5% | 80% | | | | | | | | | | | | | |
| 52 | Fast Phaser | Phaser | 6.2 | 67.5 | 58.0 | 65% | 65% | -19 | | | | | | | | | | | | |
| 53 | Slow Phaser | Phaser | 0.6 | 67.5 | 96.0 | 65% | 65% | -19 | | | | | | | | | | | | |
| 54 | Funky Phaser | Phaser | 1.1 | 58.0 | 0 | 31.5% | 31% | -6 | | | | | | | | | | | | |
| 55 | Large Phaser | Phaser | 0.6 | 100.0 | 58.0 | 79% | 78% | -6 | | | | | | | | | | | | |
| 56 | Sweet Rotation | Phaser | 3.9 | 43.0 | 76.0 | 31.5% | 33% | 0 | | | | | | | | | | | | |
| 57 | Hard Rotation | Phaser | 16.4 | 43.0 | 78.0 | 54.5% | 53% | 0 | | | | | | | | | | | | |
| 58 | Slow Rotary | Rotary | | | | | | | | | | | SLOW | 6.5 | 0.35 | | | | | |
| 59 | Fast Rotary | Rotary | | | | | | | | | | | FAST | 6.5 | 0.35 | | | | | |
| 60 | Slow Tremolo | Phaser | | | | | | | | | | | | | | | | | | |
| 61 | Fast Tremolo | Phaser | | | | | | | | | | | | | | | | | | |
| No. | PITCH | PITCH | Glob. Pitch | Fine Pitch | | | | | | | | | | | | | | | | |
| 62 | Fine pitch + | Pitch | 0 | 5 | | | | | | | | | | | | | | | | |
| 63 | Fine pitch - | Pitch | 0 | -6 | | | | | | | | | | | | | | | | |
| 64 | Pitch 4 | Pitch | 5 | -2 | | | | | | | | | | | | | | | | |
| No. | REV+DEL | REV | RT | ROOM | PD | HF | DEL | LD | RD | L FB | R FB | HF | | | | | | | | |
| 65 | Heavy D&R Vocals | Vocal | 4.5 | 30 | 5 | 3.21 | Stereo | 300 | 150 | 24% | 60% | -5 | | | | | | | | |
| 66 | Soft D&R Vocals | Vocal | 1.0 | 15 | 20 | 6.94 | Stereo | 111 | 150 | 0% | 0% | -5 | | | | | | | | |
| 67 | Drum Hall | Hall | 1.7 | 35 | 16 | 8.98 | Stereo | 200 | 100 | 50% | 50% | -20 | | | | | | | | |
| 68 | Small Reflections | Hall | 1.0 | 15 | 16 | 8.98 | Stereo | 100 | 90 | 5% | 5% | -12 | | | | | | | | |
| 69 | Plate Delay | Room | 1.7 | 20 | 18 | 8.98 | Stereo | 300 | 150 | 42% | 61% | -10 | | | | | | | | |
| 70 | Gymnasium | Hall | 1.5 | 20 | 225 | 6.94 | Stereo | 200 | 209 | 43% | 43% | -11 | | | | | | | | |
| 71 | Smooth Church | Hall | 2.1 | 38 | 20 | 3.21 | Stereo | 150 | 250 | 60.5% | 33% | -11 | | | | | | | | |
| 72 | Background | Plate | 1.7 | 30 | 20 | 6.94 | Stereo | 111 | 150 | 0% | 0% | -5 | | | | | | | | |
| 73 | Back Gate | Plate | 0.6 | 10 | 5 | 6.94 | Stereo | 200 | 300 | 0% | 0% | 0 | | | | | | | | |
| No. | REV+MOD | REV | RT | ROOM | PD | HF | | | | | | | | | | | | | | |
| 74 | C&R Vocals | Plate | 2.1 | 20 | 125 | 8.98 | | | | | | | | | | | | | | |
| 75 | Guitar Combo | Plate | 1.2 | 30 | 8 | 8.98 | | | | | | | | | | | | | | |
| 76 | Electric Hall | Plate | 1.7 | 30 | 15 | 5.37 | | | | | | | | | | | | | | |
| 77 | Soft Chords | Plate | 1.3 | 15 | 10 | 11.6 | | | | | | | | | | | | | | |
| 78 | Ambience | Hall | 2.1 | 20 | 50 | 8.98 | | | | | | | | | | | | | | |
| 79 | Reflections | Hall | 1.2 | 10 | 125 | 8.98 | | | | | | | | | | | | | | |
| 80 | Flanged Piano | Plate | 0.6 | 5 | 15 | 11.6 | | | | | | | | | | | | | | |
| 81 | Flanged Vocal | Plate | 1.0 | 15 | 15 | 1.15 | | | | | | | | | | | | | | |
| 82 | Rich Room | Room | 1.7 | 45 | 15 | 5.37 | | | | | | | | | | | | | | |
| 83 | Vibra Hall | Hall | 2.4 | 54 | 22 | 6.94 | | | | | | | | | | | | | | |
| 84 | Phased Piano | Plate | 1.3 | 42 | 20 | 5.37 | | | | | | | | | | | | | | |
| 85 | Funky Hall | Hall | 0.7 | 20 | 12 | 8.98 | | | | | | | | | | | | | | |
| 86 | Tremolo Hall | Hall | 1.7 | 38 | 14 | 1.92 | | | | | | | | | | | | | | |
| 87 | Rotary Room | Room | 0.8 | 15 | 8 | 1.49 | | | | | | | | | | | | | | |
| 88 | Rotary Jazz | Room | 0.6 | 22 | 12 | 1.92 | | | | | | | | | | | | | | |
| No. | REV+MOD | REV | RT | ROOM | PD | HF | MOD | Mod. freq. | Mod. Depth | Pan Depth | R FB | L FB | LPF | Pan freq. | Slow/Fast | Attack | Xover | | | |
| 74 | C&R Vocals | Chorus | 2.5 | 63.0 | 0 | | | | | | | | | | | | | | | |
| 75 | Guitar Combo | Chorus | 1.1 | 83.5 | 39.5 | | | | | | | | | | | | | | | |
| 76 | Electric Hall | Chorus | 7.2 | 47.5 | 75.5 | | | | | | | | | | | | | | | |
| 77 | Soft Chords | Chorus | 1.1 | 10.0 | 47.5 | | | | | | | | | | | | | | | |
| 78 | Ambience | Chorus | 2.5 | 63.0 | 0 | | | | | | | | | | | | | | | |
| 79 | Reflections | Chorus | 0.7 | 83.5 | 47.5 | | | | | | | | | | | | | | | |
| 80 | Flanged Piano | Flanger | 0.2 | 89.5 | 16.0 | 68% | 75% | -0.08 | | | | | | | | | | | | |
| 81 | Flanged Vocal | Flanger | 1.6 | 25.5 | 47.0 | 60% | 60% | -0.35 | | | | | | | | | | | | |
| 82 | Rich Room | Flanger | 1.6 | 25.5 | 53.0 | 60% | 68% | -0.08 | | | | | | | | | | | | |
| 83 | Vibra Hall | Flanger | 6.7 | 6.0 | 28.0 | 60% | 60% | -0.1 | | | | | | | | | | | | |
| 84 | Phased Piano | Phaser | 0.9 | 67.5 | 58.0 | 65% | 65% | -19 | | | | | | | | | | | | |
| 85 | Funky Hall | Phaser | 1.1 | 58.0 | 0 | 31.5% | 31.5% | -6 | | | | | | | | | | | | |
| 86 | Tremolo Hall | Phaser | | | | | | | | | | | | | | | | | | |
| 87 | Rotary Room | Rotary | | | | | | | | | | | | | | | | | | |
| 88 | Rotary Jazz | Rotary | | | | | | | | | | | | | | | | | | |

FX 24 - PRESET TABLE

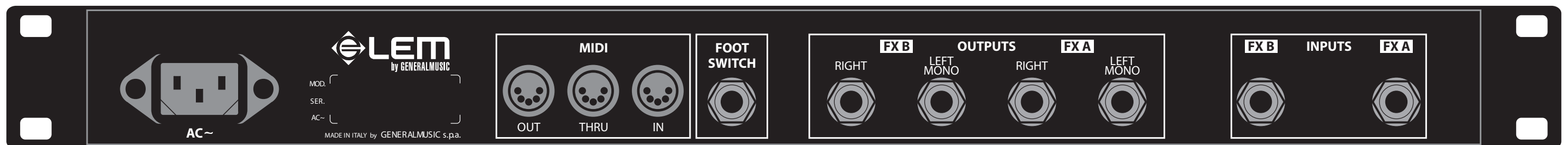
| No. | REV+DEL+MOD | REV | RT | ROOM | PD | HF | DEL | LD | RD | L FB | R FB | HF | MOD | Mod. freq. | Mod. Depth | Pan Depth | R FB | L FB | LPF | Pan freq. | Slow/Fast | Attack | Xover |
|-----|-----------------|-------|-----|------|-----|------|--------|-----|-----|-------|-------|-----|---------|------------|------------|-----------|-------|-------|------|-----------|-----------|--------|-------|
| 89 | Stereo Guitar | Hall | 1.0 | 27 | 22 | thru | Stereo | 100 | 50 | 0 | 0 | -13 | Chorus | 1.1 | 61.5 | 9.5 | | | | | | | |
| 90 | Solo Guitar | Hall | 1.7 | 20 | 22 | thru | Stereo | 150 | 100 | 0 | 0 | -13 | Chorus | 2.1 | 68.5 | 44.0 | | | | | | | |
| 91 | Deep Impact | Plate | 1.0 | 30 | 225 | thru | Stereo | 30 | 50 | 0 | 0 | -13 | Flanger | 3.8 | 0 | 64.0 | 85% | 85% | 0 | | | | |
| 92 | Cavern | Plate | 3.6 | 30 | 70 | thru | Stereo | 100 | 150 | 0 | 0 | -13 | Flanger | 3.9 | 0 | 64.0 | 85% | 85% | 0 | | | | |
| 93 | Ice Pizzicato | Room | 6.1 | 30 | 50 | thru | Stereo | 100 | 110 | 61.5% | 55% | 0 | Flanger | 2.1 | 51.5 | 60.0 | 100% | 100% | 0 | | | | |
| 94 | Split Signals | Room | 0.6 | 30 | 50 | thru | Stereo | 10 | 300 | 61.5% | 61.5% | 0 | Flanger | 38.7 | 0.5 | 0 | 100% | 100% | -10 | | | | |
| 95 | Inside A Dream | Room | 6.1 | 30 | 50 | 13 | Stereo | 300 | 0 | 66.5% | 0 | 0 | Flanger | 38.7 | 0.5 | 0 | 100% | 100% | -10 | | | | |
| 96 | Foundry Room | Room | 1.5 | 8 | 0 | thru | Stereo | 1 | 1 | 50% | 25% | 0 | Phaser | 0.6 | 95.5 | | 73.5% | 75% | -7.9 | | | | |
| 97 | Foundry Cut | Room | 1.2 | 10 | 0 | thru | Stereo | 1 | 1 | 50% | 25% | 0 | Phaser | 0.6 | 95.5 | | 73.5% | 75% | -7.9 | | | | |
| 98 | Snake Guitar | Hall | 6.1 | 20 | 225 | thru | Stereo | 100 | 200 | 80% | 60% | 0 | Phaser | 2.1 | 100 | | 80% | 92% | 0 | | | | |
| 99 | Spatial Groove | Plate | 2.9 | 15 | 40 | thru | Stereo | 337 | 325 | 37% | 20% | -13 | Phaser | 5.3 | 13.0 | | 73.5% | 68% | 0 | | | | |
| 100 | Glass Cavern | Room | 4.5 | 40 | 125 | thru | Stereo | 10 | 30 | 37% | 20% | -13 | Phaser | 0.2 | 83.5 | | 82.5% | 82.5% | 0 | | | | |
| 101 | Silica Hall | Hall | 2.1 | 25 | 70 | thru | Stereo | 10 | 30 | 37% | 20% | -13 | Phaser | 0.2 | 83.5 | | 82.5% | 82.5% | 0 | | | | |
| 102 | Brake Loop | Plate | 2.1 | 25 | 70 | thru | Stereo | 100 | 50 | 37% | 20% | -13 | Phaser | 0.2 | 83.5 | | 82.5% | 82.5% | 0 | | | | |
| 103 | Separated Floor | Plate | 0.9 | 25 | 70 | 32 | Stereo | 100 | 50 | 37% | 20% | -13 | Phaser | 0.2 | 83.5 | | 82.5% | 82.5% | 0 | | | | |
| 104 | Pulsar | Hall | 4.5 | 5 | 225 | 1.92 | Stereo | 186 | 174 | 36% | 30% | -13 | Phaser | 0.2 | 51.0 | | 46.5% | 82% | 0 | | | | |
| 105 | Electric Chain | Hall | 4.5 | 5 | 225 | 1.92 | Stereo | 186 | 174 | 36% | 30% | -13 | Phaser | 0.2 | 26.0 | | 13% | 82% | 0 | | | | |
| 106 | Chewingum | Hall | 4.5 | 30 | 50 | thru | Stereo | 186 | 174 | 36% | 30% | -13 | Phaser | 0.2 | 26.0 | | 13% | 82% | 0 | | | | |
| 107 | Brake Rubber | Hall | 4.5 | 30 | 50 | thru | Stereo | 186 | 174 | 0 | 0 | -13 | Phaser | 0.2 | 26.0 | | 13% | 82% | 0 | | | | |
| 108 | Slow Room | Room | 1.3 | 8 | 0 | 3.21 | Stereo | 20 | 10 | 0 | 0 | -10 | Rotary | | | | | | | | SLOW | 6.5 | 0.35 |
| 109 | Fast Room | Room | 1.3 | 15 | 30 | 3.21 | Stereo | 20 | 10 | 0 | 0 | -10 | Rotary | | | | | | | | FAST | 6.5 | 0.35 |
| 110 | Rotary Gate | Gate | 1.7 | 15 | 30 | 3.21 | Stereo | 50 | 25 | 30% | 42% | -10 | Rotary | | | | | | | | FAST | 6.5 | 0.35 |
| 111 | Extreme Rotary | Plate | 0.9 | 15 | 30 | 3.21 | Stereo | 50 | 25 | 30% | 42% | -10 | Rotary | | | | | | | | FAST | 1 | 0.70 |
| 112 | Rotated Echo | Plate | 0.6 | 15 | 30 | 3.21 | Stereo | 250 | 300 | 68.5% | 63% | -10 | Rotary | | | | | | | | FAST | 5.5 | 0.70 |
| 113 | Nightmare Echo | Plate | 0.6 | 15 | 30 | 3.21 | Stereo | 30 | 10 | 93% | 85% | -10 | Rotary | | | | | | | | FAST | 5.5 | 0.70 |
| 114 | Deep Space | Plate | 6.1 | 20 | 50 | thru | Stereo | 210 | 250 | 53.5% | 50% | 0 | Chorus | 0.6 | 25.0 | 0.5 | | | | | | | |
| 115 | Metal Geyser | Plate | 0.8 | 20 | 50 | thru | Stereo | 210 | 250 | 0 | 0 | 0 | Chorus | 0.6 | 25.0 | 0.5 | | | | | | | |
| 116 | Dark Shade | Plate | 0.8 | 20 | 50 | thru | Stereo | 210 | 250 | 0 | 0 | 0 | Flanger | 28 | 100 | 0.5 | 50% | 50% | 0 | | | | |
| 117 | Smooth Voice | Plate | 1.0 | 30 | 30 | 11.6 | Stereo | 15 | 5 | 7% | 7% | -9 | Flanger | 0.6 | 74.5 | 23.0 | 70% | 63% | 0 | | | | |
| 118 | Vega Loop | Plate | 0.6 | 30 | 5 | thru | Stereo | 105 | 70 | 7% | 7% | -9 | Flanger | 0.4 | 10.0 | 0 | 73.5% | 70% | -5 | | | | |
| 119 | Acoustic Dreams | Hall | 3.6 | 30 | 20 | thru | Stereo | 233 | 256 | 7% | 7% | 0 | Flanger | 0.6 | 74.5 | 23.0 | 70% | 69% | 0 | | | | |
| 120 | Crazy Tremolo | Hall | 6.1 | 30 | 20 | thru | Stereo | 93 | 151 | 54.5 | 53 | 0 | Flanger | 6.2 | 0 | 0 | 0 | 78% | 0 | | | | |
| 121 | Space Tremolo | Plate | 6.1 | 30 | 20 | thru | Stereo | 12 | 24 | 33.5% | 30% | 0 | Flanger | 4.4 | 37.0 | 90.0 | 95.5% | 95.5% | 0 | | | | |
| 122 | Guitar Stop | Plate | 0.8 | 15 | 5 | 6.94 | Stereo | 174 | 174 | 9.5% | 12 | 0 | Chorus | 0.7 | 75.5 | 53.5 | | | | | | | |
| 123 | A-synch Echo | Plate | 1.0 | 30 | 225 | thru | Stereo | 15 | 11 | 0.5% | 0.5% | 0 | Flanger | 3.1 | 0 | 90.0 | 85% | 85% | 0 | | | | |
| 124 | Washed Strings | Plate | 1.0 | 30 | 15 | thru | Stereo | 163 | 0 | 24.5% | 0 | -1 | Chorus | 1.1 | 100 | 0 | | | | | | | |
| 125 | Arpeggio | Plate | 1.0 | 30 | 225 | thru | Stereo | 163 | 0 | 24.5% | 0 | -1 | Flanger | 0.7 | 100 | 90.0 | 85% | 85% | 0 | | | | |
| 126 | Wash Cut | Gate | 2.1 | 30 | 225 | thru | Stereo | 163 | 0 | 24.5% | 0 | -1 | Flanger | 0.7 | 100 | 90.0 | 85% | 85% | 0 | | | | |
| 127 | Pad Torsion | Hall | 2.4 | 13 | 0 | thru | Stereo | 15 | 30 | 0 | 0 | 0 | Flanger | 0.2 | 90.5 | 0 | 60.5% | 57% | 0 | | | | |
| 128 | Soft Torsion | Hall | 2.4 | 15 | 0 | thru | Stereo | 50 | 80 | 64% | 56% | 0 | Flanger | 0.2 | 90.5 | 16.0 | 88.5% | 64% | -8.5 | | | | |

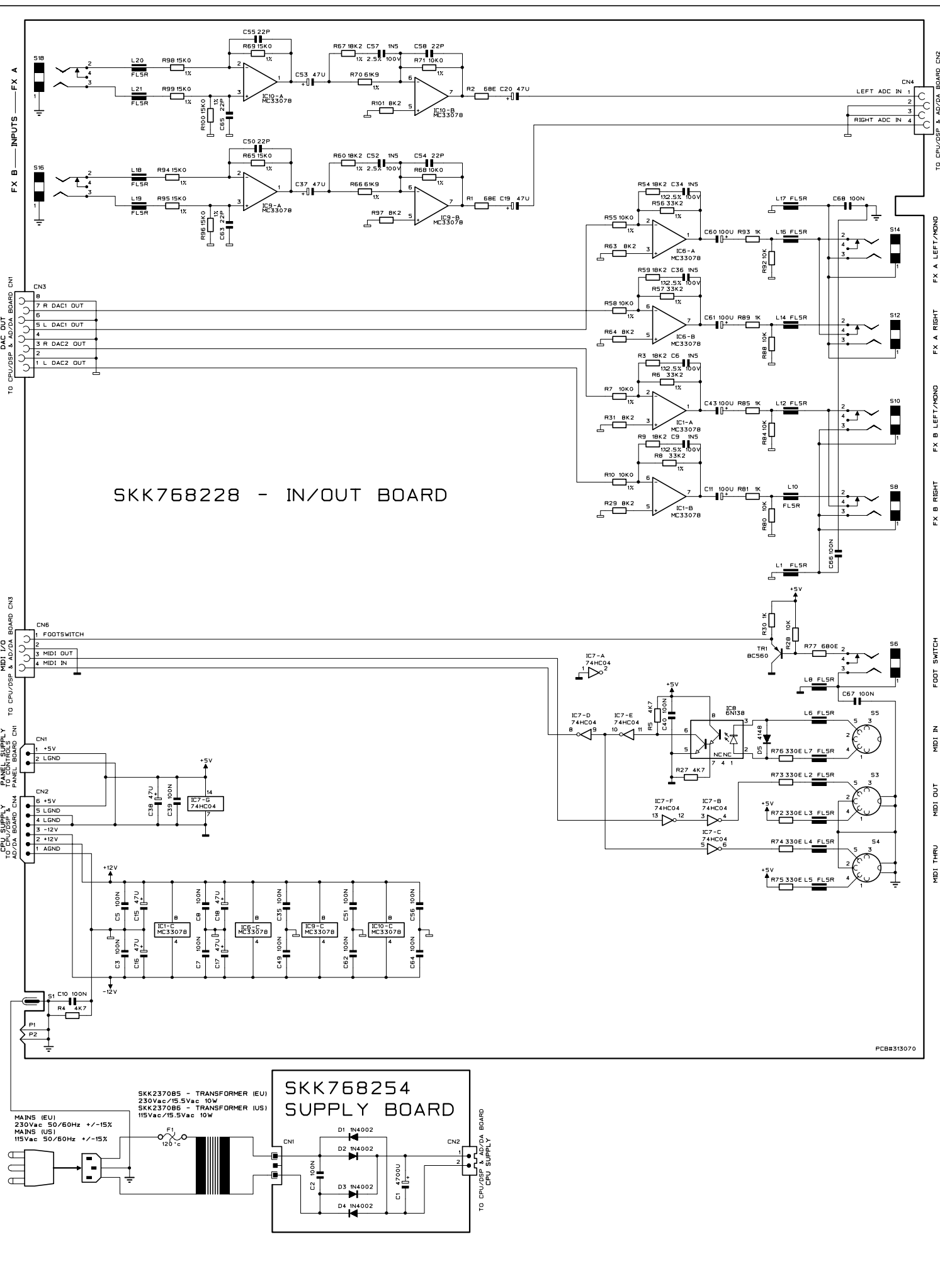
| | | |
|------|-----|------|
| SLOW | 6.5 | 0.35 |
| FAST | 6.5 | 0.35 |
| FAST | 6.5 | 0.35 |
| FAST | 1 | 0.70 |
| FAST | 5.5 | 0.70 |
| FAST | 5.5 | 0.70 |

CONTROLS PANEL

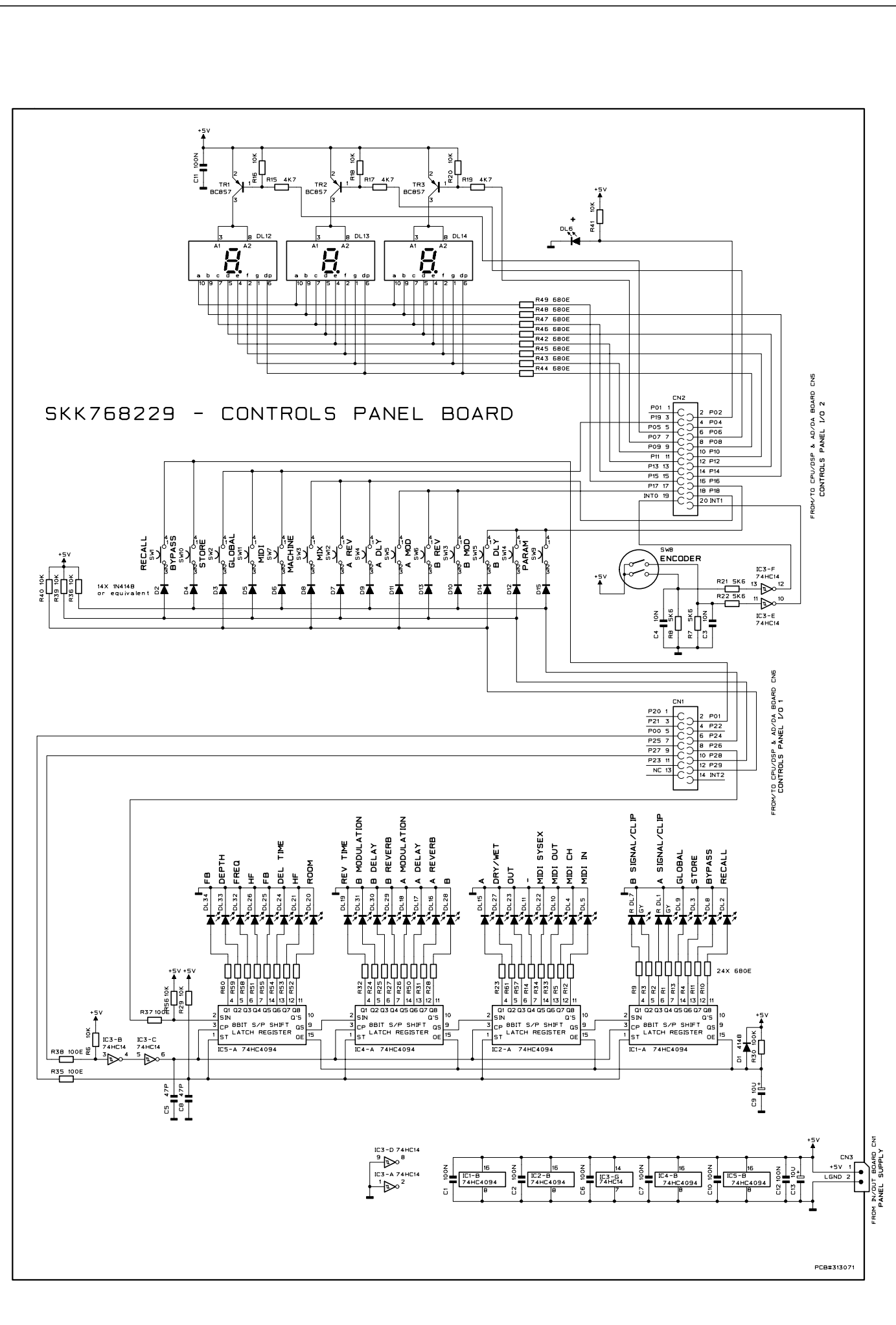


REAR PANEL





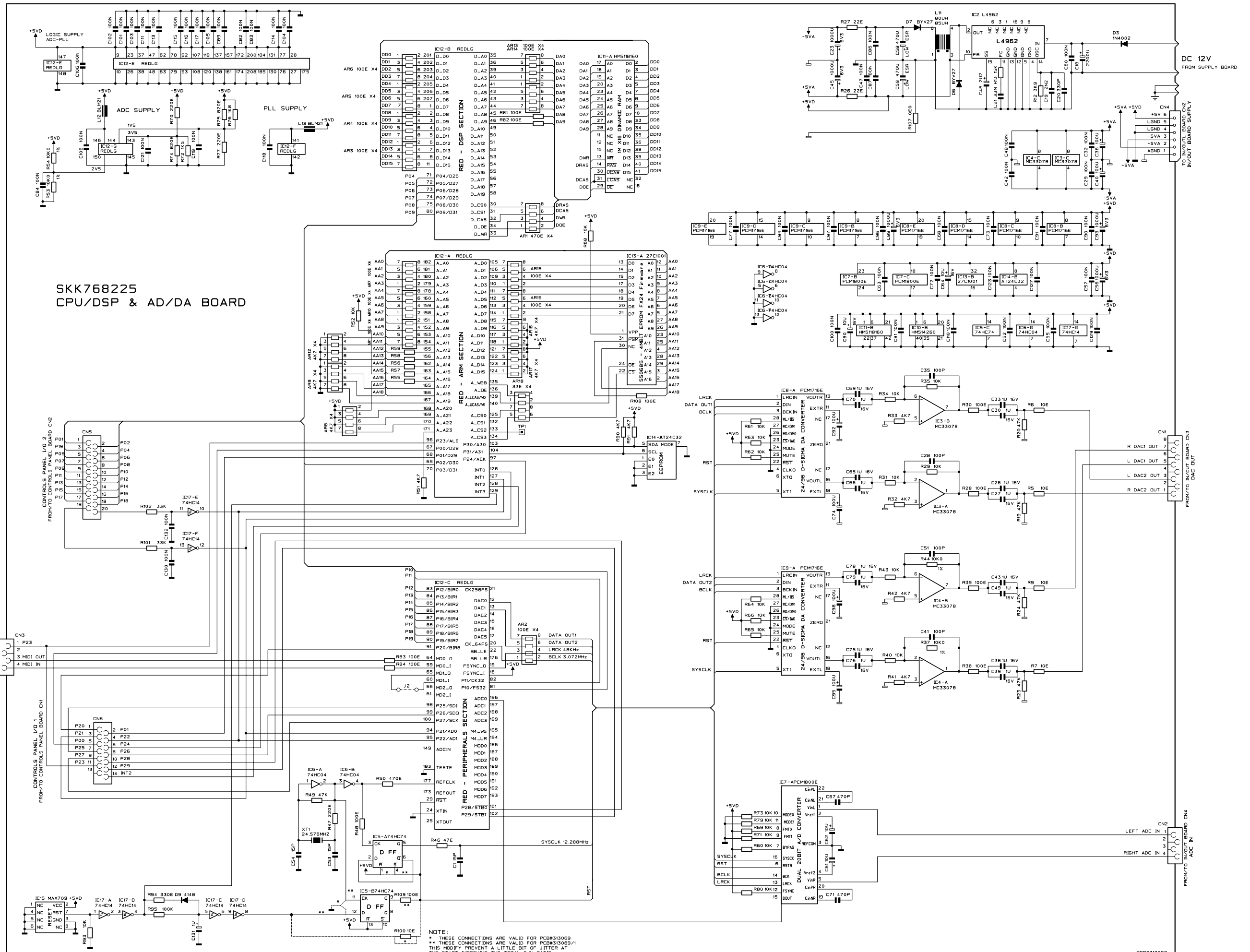
SKK768228 - IN/OUT BOARD



SKK768229 - CONTROLS PANEL BOARD

| | | | |
|------------------|---------------|------------------------|---|
| DRW G. BOCCATO | DWG# 550667 | PCB# 313070 | GENERALMUSIC S.p.A. ITALY |
| CKD G. RICCI | DATE 13-02-01 | SCHEMATIC DIAGRAM FX24 | ALL RIGHTS ARE RESERVED. NO COPIES OR REPRODUCTIONS OF THIS DOCUMENT WITHOUT WRITTEN CONSENT BY GENERALMUSIC. |
| APP. F. GAZZILLI | REV: A | IN/OUT BOARD | |

| | | | |
|------------------|---------------|-------------------------|---|
| DRW G. BOCCATO | DWG# 550668 | PCB# 313071 | GENERALMUSIC S.p.A. ITALY |
| CKD G. RICCI | DATE 27/03/00 | SCHEMATIC DIAGRAM FX 24 | ALL RIGHTS ARE RESERVED. NO COPIES OR REPRODUCTIONS OF THIS DOCUMENT WITHOUT WRITTEN CONSENT BY GENERALMUSIC. |
| APP. F. GAZZILLI | REV: A | CONTROLS PANEL BOARD | |



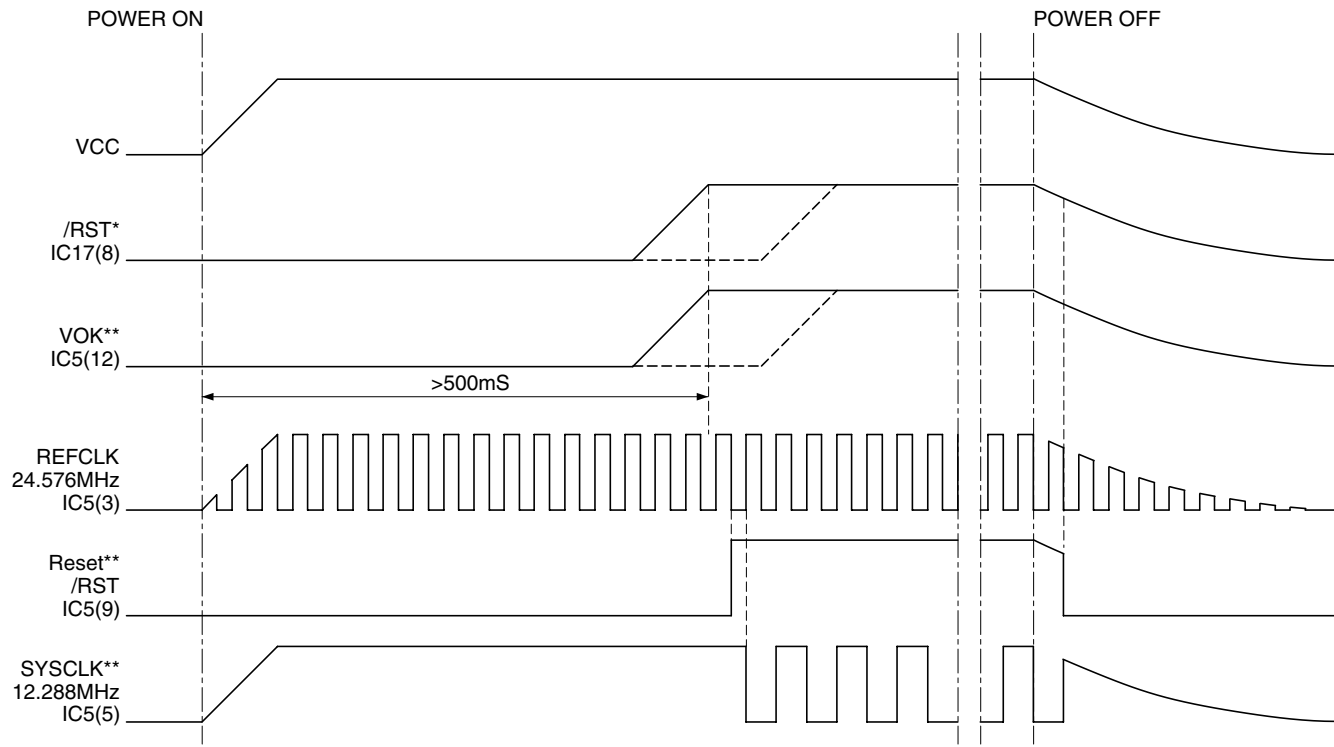
**SKK768225
CPU/DSP & AD/DA BOARD**

NOTE:
* THESE CONNECTIONS ARE VALID FOR PCB#313069
** THESE CONNECTIONS ARE VALID FOR PCB#313069/1
THIS MODIFY PREVENT A LITTLE BIT OF JITTER AT THE START IMPROVING THE TOTAL S/N RATIO.

PCB#313069

| | | | |
|------------------|---------------|-----------------------|---|
| DRW G. BOCCATO | DWG# 768225 | PCB# 313069 | GENERALMUSIC S.p.A. ITALY |
| CKD G. RICCI | DATE 13/02/01 | SCHEMATIC DIAGRAM | ALL RIGHTS ARE RESERVED. NO COPIES OR REPRODUCTIONS OF THIS DOCUMENT WITHOUT WRITTEN CONSENT BY GENERALMUSIC. |
| APP. F. GAZZILLI | REV: D | CPU/DSP & AD/DA BOARD | |

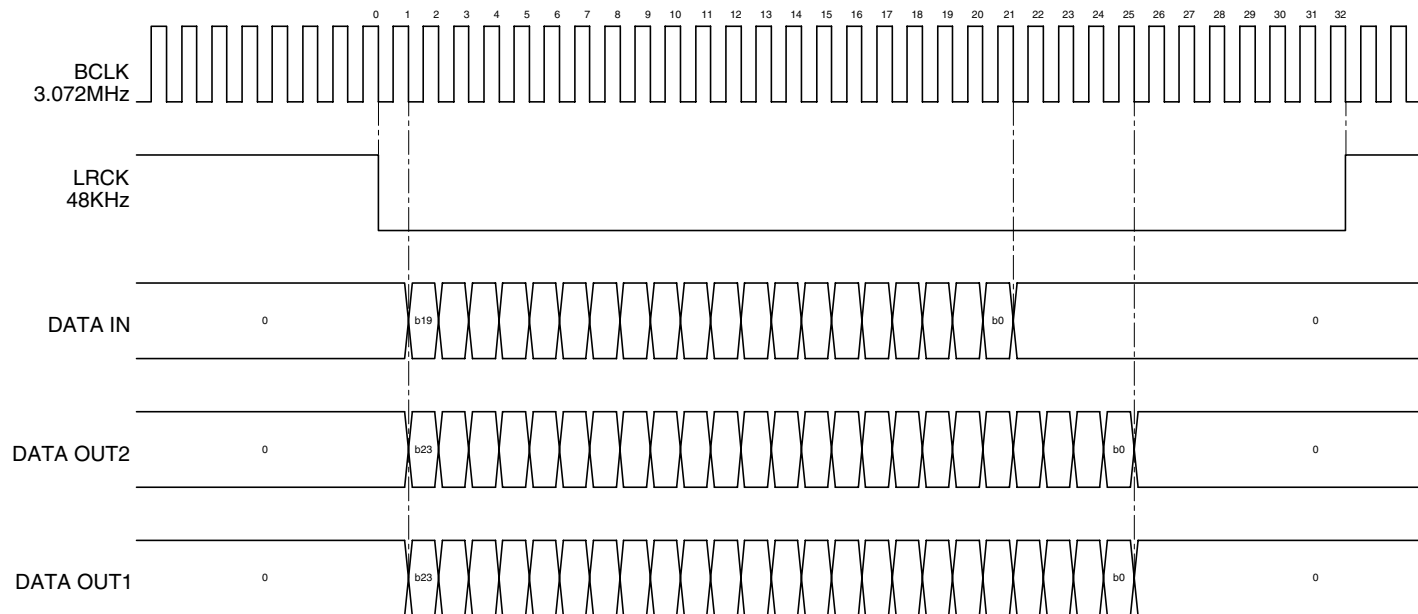
POWER & RESET TIMING



* valid for pcb#313069 only.

** valid for pcb#313069/1 only.

AD/DA TIMING



| | | | |
|---------------|------------------|--------------|--|
| DRW BOCCATO | DWG# 550670 | PCB# | GENERALMUSIC S.p.A. ITALY |
| CKD L.GIBIN | DISK: 6 PRT: 1/1 | TIMING TABLE | ALL RIGHTS ARE RESERVED. NO COPIES OR REPRODUCE THIS DOCUMENT WITHOUT WRITTEN CONSENT BY GENERALMUSIC. |
| APP. GAZZILLI | REV: 20/02/01 | | |

Spare Part List

| Code | Description |
|--------------------|----------------------------------|
| Accessories | |
| 370534 | "Lem" Adhesive Logo |
| 277348 | Owner's Manual (Italian-English) |
| SKK180792 | Adhesive Preset Table |
| 130274 | Mains Cable (EU) |
| 130276 | Mains Cable (US) |

| Assembly | |
|-----------------|--------------------------------------|
| SKK667723 | Top Chassis |
| SKK667722 | Bottom Chassis |
| SKK667721 | Controls Panel |
| SKK657276 | Display Screen |
| SKK347394 | Rubber Switch Actuator |
| SKK340961 | Encoder Knob |
| SKK237086 | 115/15.5Vac 10W Transformer (US) |
| SKK237085 | 230/15.5Vac 10W Transformer (EU) |
| 120827 | 10mm Threaded Spacer |
| 120582 | M3 Black Nut |
| 120481 | 3mm Black Shakeproof Washer |
| 120467 | 4.2x10x0.5 Nylon Washer |
| 120451 | 3.2x7x0.5 Black Washer |
| 120276 | B2.9x6.5mm Screw |
| 120029 | M3x6tc Black Screw |
| 120025 | M3x10tsp Black Screw |
| 120005 | M3x10tc Screw |
| 110614 | Mains Socket |
| 110285 | 4A 250Vac Bipolar Power Switch |
| 020491 | 100nF 10% 250Vac Polyester Capacitor |

| Supply Board | |
|--|--|
| SKK768254 Supply Board (Pcb#313088) | |
| 080156 | * 1N4002 1A 100V Rectifier Diode |
| 030858 | * 4700uF 25V 20% Vert Electrolytic Capacitor |
| 010595 | * 100n 50V -20+80% Ceramic Cap. Multilayer |

| In/Out Board | |
|--|---|
| SKK768228 In/Out Board (Pcb#313070) | |
| 230569 | * FL5R200PNT EMI Coil For Signal |
| 160098 | * Jump Length 5.1mm |
| 160093 | * Jump Length 10mm |
| 141012 | * 8 Contacts Vert Female Connector |
| 141010 | * 4 Contacts Vert Female Connector |
| 140217 | * Jack Slim Horizontal S-F Socket |
| 140212 | * 5 Poles Din Horizontal Female Socket |
| 120857 | * Vertical Male Faston 6.3mm |
| 100919 | * MC33078 Dual LN Operational Amplifier |
| 100602 | * 74HC04 Hex Inverter |
| 100035 | * 6N138 Optocoupler |
| 090194 | * BC560C TO92 LN Pnp Transistor |
| 080103 | * 1N4148 100mA 75V Signal Diode |
| 052048 | * 10K 1/8w 5% Resistor |
| 052047 | * 8K2 1/8w 5% Resistor |
| 052044 | * 4K7 1/8w 5% Resistor |
| 052036 | * 1K 1/8w 5% Resistor |
| 052034 | * 680E 1/8w 5% Resistor |
| 052030 | * 330E 1/8w 5% Resistor |
| 052022 | * 68E 1/8w 5% Resistor |
| 050491 | * 10K 1/4W 5% Resistor |
| 050451 | * 4K7 1/4W 5% Resistor |
| 050371 | * 1K 1/4W 5% Resistor |
| 042665 | * 33K2 1/4W 1% Metalized Film Resistor |
| 042632 | * 18K2 1/4W 1% Metalized Film Resistor |
| 042625 | * 15K0 1/4W 1% Metalized Film Resistor |
| 042605 | * 10K0 1/4W 1% Metalized Film Resistor |
| 030485 | * 100u 25V 20% Vert Electrolytic Capacitor |
| 030403 | * 47u 25V 20% Vert Electrolytic Capacitor |
| 022002 | * 1n5 2.5% 100V MKP Polypropylene Capacitor |
| 010595 | * 100n 50V -20+80% Ceramic Cap. Multilayer |
| 010271 | * 22p 50V 10% CL2 Ceramic Capacitor |

| Controls Panel | |
|--|--|
| SKK768229 Controls Panel (Pcb#313071) | |
| 340856 | * 6.4mm Led Spacer |
| 340825 | * 2.8mm Led Spacer |
| 141018 | * 20 Contacts Vert Female Connector |
| 141015 | * 14 Contacts Vert Female Connector |
| 140529 | * Microswitch 12V 50mA 0.25mm |
| 110261 | * Dial Encoder with Snap |
| 103028 | * 74HC4094M1R SOIC 8bit Shift/Latch Register |
| 103000 | * 74HC14D Soic Hex Inverter Schmitt Trigger |
| 091001 | * BC857 TO236 Smd Pnp Transistor |
| 081000 | * PMLL4148 Smd 100mA 75V Signal Diode |
| 080742 | * Led 3mm Wide Diffused Red-Grn |
| 080717 | * HDN1105 7 Segments Display |

| | |
|--------|--|
| 080705 | * Led 3mm 60deg Diffused Red |
| 055060 | * 100K 1/16w 5% Smd Resistor 0603 |
| 055048 | * 10K 1/16w 5% Smd Resistor 0603 |
| 055045 | * 5K6 1/16w 5% Smd Resistor 0603 |
| 055044 | * 4K7 1/16w 5% Smd Resistor 0603 |
| 055037 | * 1K2 1/16w 5% Smd Resistor 0603 |
| 055024 | * 100E 1/16w 5% Smd Resistor 0603 |
| 052038 | * 1K5 1/8w 5% Resistor |
| 030246 | * 10u 25V 20% Low Prof Vert Electrolytic Capacitor |
| 011260 | * 100n 50V 10% Smd CL2 Y5V 0603 |
| 011248 | * 10n 50V 10% Smd CL2 X7R 0603 |
| 011220 | * 47p 50V 10% Smd CL2 X7R 0603 |

Cpu/Dsp & AD/DA Board

| SKK768225 Cpu/Dsp & AD/DA Board (Pcb#313069) | |
|---|--|
| 550685 | * 27C4001D Eprom 4mbit "FX24 Firmware" |
| 250524 | * 25x25mm Thermoconductor Adhesive |
| 231000 | * BLM21A102STP Smd EMI Coil For Signal |
| 230523 | * 80-85uH Switching Dual Coil |
| 177690 | * Heatsink |
| 171039 | * Ground Leaf |
| 141018 | * 20 Contacts Vert Female Connector |
| 141015 | * 14 Contacts Vert Female Connector |
| 141012 | * 8 Contacts Vert Female Connector |
| 141010 | * 4 Contacts Vert Female Connector |
| 140606 | * 32pin IC Socket |
| 120276 | * B2.9x6.5mm Screw |
| 106003 | * MAX709 Power Monitor With Reset |
| 106001 | * MC33078P SOIC Dual Low Noise Op. Amp. |
| 105008 | * RED208 Risc Cpu and Dsp |
| 104021 | * AT24C32N SOIC 32Kbit Serial Access EEprom |
| 104009 | * HM5118160ALJ 16Mbit Dram Ta=70nS |
| 103043 | * PCM1716 24 Bit Stereo Dac |
| 103042 | * PCM1800 20 Bit Stereo Adc |
| 103010 | * 74HC04D SOIC Hex Inverter |
| 103007 | * 74HC74D SOIC Dual Flip-Flop |
| 103000 | * 74HC14D Soic Hex Inverter Schmitt Trigger |
| 100901 | * L4962 5-40V 1.5A Switching Regulator |
| 081000 | * PMLL4148 Smd 100mA 75V Signal Diode |
| 080170 | * BYV27 2A 100V Fast Recovery Diode |
| 080156 | * 1N4002 1A 100V Rectifier Diode |
| 055103 | * 470E X4 1/16w 5% Smd Resistor Array |
| 055102 | * 33E X4 1/16w 5% Smd Resistor Array |
| 055101 | * 4K7 X4 1/16w 5% Smd Resistor Array |
| 055100 | * 100E X4 1/16w 5% Smd Resistor Array |
| 055060 | * 100K 1/16w 5% Smd Resistor 0603 |
| 055056 | * 47K 1/16w 5% Smd Resistor 0603 |
| 055054 | * 33K 1/16w 5% Smd Resistor 0603 |
| 055050 | * 15K 1/16w 5% Smd Resistor 0603 |
| 055048 | * 10K 1/16w 5% Smd Resistor 0603 |
| 055044 | * 4K7 1/16w 5% Smd Resistor 0603 |
| 055043 | * 3K9 1/16w 5% Smd Resistor 0603 |
| 055039 | * 1K8 1/16w 5% Smd Resistor 0603 |
| 055038 | * 1K5 1/16w 5% Smd Resistor 0603 |
| 055035 | * 820E 1/16w 5% Smd Resistor 0603 |
| 055032 | * 470E 1/16w 5% Smd Resistor 0603 |
| 055030 | * 330E 1/16w 5% Smd Resistor 0603 |
| 055028 | * 220E 1/16w 5% Smd Resistor 0603 |
| 055024 | * 100E 1/16w 5% Smd Resistor 0603 |
| 055020 | * 47E 1/16w 5% Smd Resistor 0603 |
| 055012 | * 10E 1/16w 5% Smd Resistor 0603 |
| 050171 | * 22E 1/4W 5% Resistor |
| 042605 | * 10K0 1/4W 1% Metalized Film Resistor |
| 042260 | * 0E 1/4W Resistor |
| 031007 | * 10u 16V 20% Smd Electrolytic Tantalum Capacitor |
| 030950 | * 470u 16V 20% Low Esr Vert Electrolytic Capacitor |
| 030805 | * 2200u 25V 20% Vert Electrolytic Capacitor |
| 030715 | * 1000u 6v3 20% Vert Electrolytic Capacitor |
| 030485 | * 100u 25V 20% Vert Electrolytic Capacitor |
| 030245 | * 10u 50V 20% Vert Electrolytic Capacitor |
| 030082 | * 2u2 50V 20% Vert Electrolytic Capacitor |
| 030005 | * 1u 50V 20% Vert Electrolytic Capacitor |
| 021018 | * 33n 63V 10% MKT Polyester Capacitor |
| 021004 | * 2n2 63V 10% MKT Polyester Capacitor |
| 011260 | * 100n 16V 10% Smd CL2 X7R 0603 |
| 011232 | * 470p 16V 10% Smd CL2 X7R 0603 |
| 011230 | * 330p 16V 10% Smd CL2 X7R 0603 |
| 011220 | * 47p 16V 10% Smd CL2 X7R 0603 |
| 011214 | * 15p 16V 10% Smd CL2 X7R 0603 |
| 011103 | * 1u 16V 10% Smd CL2 XTR 1206 |
| 010722 | * 24.576MHz Quartz Resonator |

Wiring Connections

| | |
|--------|---------------------------------|
| 841263 | 8 Wires 3cm Length Flat Cable |
| 841206 | 4 Wires 20cm Length Flat Cable |
| 840826 | 14 Wires 15cm Length Flat Cable |
| 840799 | 4 Wires 7.5cm Length Flat Cable |
| 840722 | 20 Wires 10cm Length Flat Cable |